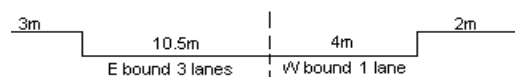


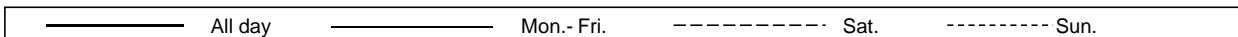
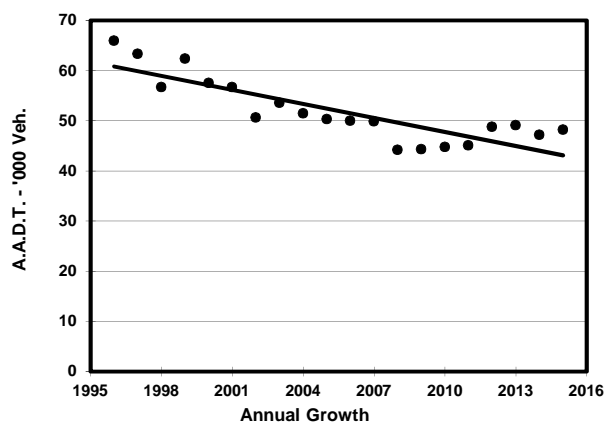
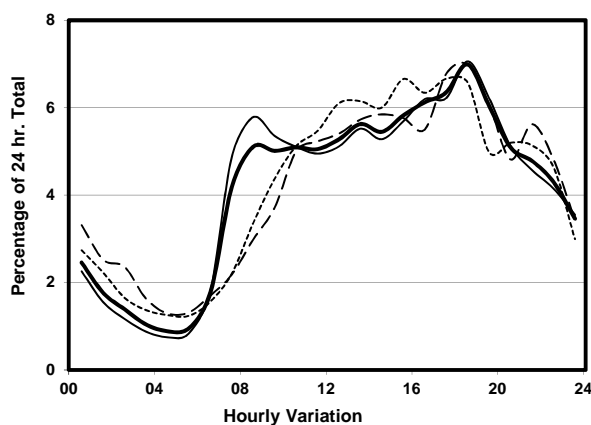
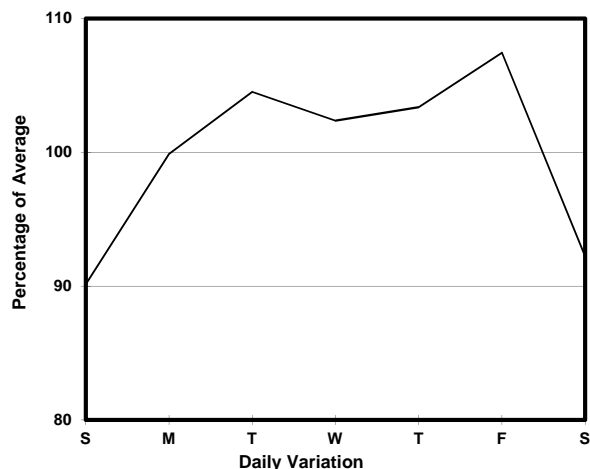
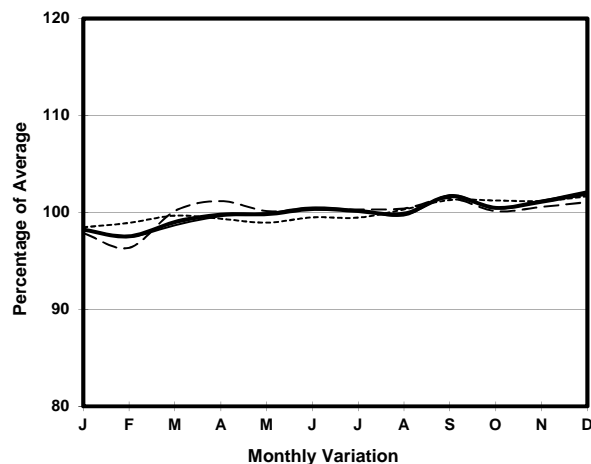
YEAR 2015  
 COVERAGE (B) STATION 4202  
 ROAD NETWORK MAJOR  
 ROAD TYPE PRIMARY DISTRIBUTOR

LINK

BOUNDARY ST (from TAI HANG TUNG RD to EMBANKMENT RD)



## 1. TRAFFIC FLOW VARIATION AND GROWTH



## 2. TRAFFIC CHARACTERISTICS (BY DIRECTION)

Parameter	All - Day	Mon. - Fri.	Sat.	Sun.
<b>EAST BOUND</b>				
A.A.D.T.	40530	42300	37170	36460
R 12 / 24 - %	65.5	66.8	59.6	64.4
R 16 / 24 - %	85.9	86.9	81.6	84.5
AM Peak Hour	0800-0900	0800-0900	0900-1000	0900-1000
One-way flow at AM peak hour	2080	2470	1260	1540
T - % (AM)	-	4.8	-	-
PM Peak Hour	1800-1900	1800-1900	1800-1900	1700-1800
One-way flow at PM peak hour	2850	3010	2600	2470
T - % (PM)	-	4.2	-	-
Prop.of commercial vehicles - 16 hr.	-	5.2	-	-
<b>WEST BOUND</b>				
A.A.D.T.	7620	7800	7450	7130
R 12 / 24 - %	69	69.1	68.6	68.2
R 16 / 24 - %	88.5	89.1	86.7	87.3
AM Peak Hour	0800-0900	0700-0800	0900-1000	0900-1000
One-way flow at AM peak hour	380	470	390	360
T - % (AM)	-	15.1	-	-
PM Peak Hour	1800-1900	1800-1900	1800-1900	1600-1700
One-way flow at PM peak hour	520	530	520	510
T - % (PM)	-	3.5	-	-
Prop.of commercial vehicles - 16 hr.	-	4.5	-	-

## 3. OTHER INFORMATION AND COMMENT

**Coverage (B) Station 4202**  
**Year 2015**

**4. Vehicle classification and occupancy - Monday to Friday**

Time		Class of vehicle									
		Motor	Private	Taxi	Private	PLB	Goods veh.		Non	Fr. Bus	
		Cycle	Car		LB		Light	M & H	Fr. Bus	SD	DD
0700-0800	Pro	3.4	23.9	33.6	10.0	5.9	11.9	1.0	7.9	0.3	2.1
	Ocp	1.1	1.5	2.0	8.4	12.1	1.4	1.2	17.6	15.9	36.9
0800-0900	Pro	1.8	51.1	19.6	3.1	4.3	15.4	0.7	2.3	0.3	1.4
	Ocp	1.1	1.4	2.1	6.9	10.8	1.8	1.5	17.1	20.1	36.2
0900-1000	Pro	1.6	41.1	26.0	1.8	4.5	20.6	1.6	0.8	0.2	1.7
	Ocp	1.2	1.3	2.0	3.0	9.3	1.7	1.6	1.0	12.3	19.6
1000-1100	Pro	2.7	33.9	27.0	1.2	5.2	24.6	1.3	2.0	0.3	1.8
	Ocp	1.0	1.4	1.9	1.1	6.9	1.6	1.6	5.9	11.1	23.1
1100-1200	Pro	1.9	37.0	23.1	3.4	5.7	22.3	1.8	2.7	0.3	1.7
	Ocp	1.1	1.3	2.0	2.0	6.8	1.6	1.7	1.8	9.6	27.2
1200-1300	Pro	4.4	40.1	26.1	2.2	5.7	17.4	0.6	1.4	0.2	1.9
	Ocp	1.0	1.6	1.8	4.9	7.8	1.6	1.5	8.0	13.0	30.4
1300-1400	Pro	2.0	40.4	25.1	3.6	3.8	19.1	1.6	2.3	0.4	1.8
	Ocp	1.2	1.4	2.0	4.0	10.1	1.5	1.3	16.6	12.1	31.5
1400-1500	Pro	2.3	43.1	27.5	1.7	3.4	17.3	1.4	1.4	0.2	1.6
	Ocp	1.1	1.5	2.1	1.5	10.4	1.6	1.7	9.9	13.3	34.7
1500-1600	Pro	1.7	42.6	18.1	4.6	4.9	21.2	2.2	2.6	0.2	1.8
	Ocp	1.2	1.5	2.0	6.1	10.8	1.6	1.8	6.8	17.0	46.8
1600-1700	Pro	2.7	46.8	22.3	4.8	4.1	13.8	0.2	3.0	0.4	2.0
	Ocp	1.0	1.5	2.0	2.2	11.6	1.6	2.0	6.0	11.4	53.0
1700-1800	Pro	4.0	48.5	22.7	2.1	4.6	13.0	0.6	2.2	0.3	2.0
	Ocp	1.1	1.4	2.0	4.1	12.9	1.5	1.6	8.9	19.3	54.7
1800-1900 Peak hour	Pro	3.3	46.8	29.1	0.8	4.1	11.8	0.5	1.7	0.2	1.6
	Ocp	1.2	1.5	2.1	1.3	14.8	1.5	1.4	6.0	13.8	65.0
1900-2000	Pro	3.7	52.0	28.6	0.4	3.8	7.7	0.2	1.6	0.2	1.8
	Ocp	1.1	1.5	1.5	2.3	15.6	1.5	1.0	16.7	11.6	62.8
2000-2100	Pro	2.2	56.8	27.9	0.1	3.0	6.7	0.4	0.8	0.2	1.8
	Ocp	1.2	1.6	2.2	3.0	12.6	1.8	1.3	9.0	9.4	47.9
2100-2200	Pro	3.0	47.1	37.5	0.2	4.6	4.0	0.5	0.8	0.3	2.0
	Ocp	1.1	1.7	2.2	8.0	12.4	1.4	1.0	1.0	7.0	53.3
2200-2300	Pro	3.3	50.3	35.8	0.0	4.1	3.2	0.2	0.2	0.4	2.6
	Ocp	1.2	1.7	2.2	0.0	10.9	2.1	3.0	1.0	7.8	47.5
16 hours	Pro	2.8	44.4	26.6	2.4	4.4	14.4	0.9	2.1	0.3	1.8
	Ocp	1.1	1.5	2.0	4.8	11.0	1.6	1.5	10.6	12.8	43.0

**Legend**

**Pro.** Proportion of vehicles in % (Sum may not add up to 100% due to figure rounding)\*

**Ocp.** Average occupancy of vehicles including both driver and passengers\*

**M&H** Medium and Heavy

\* All traffic data are collected from combined bounds except for one way traffic